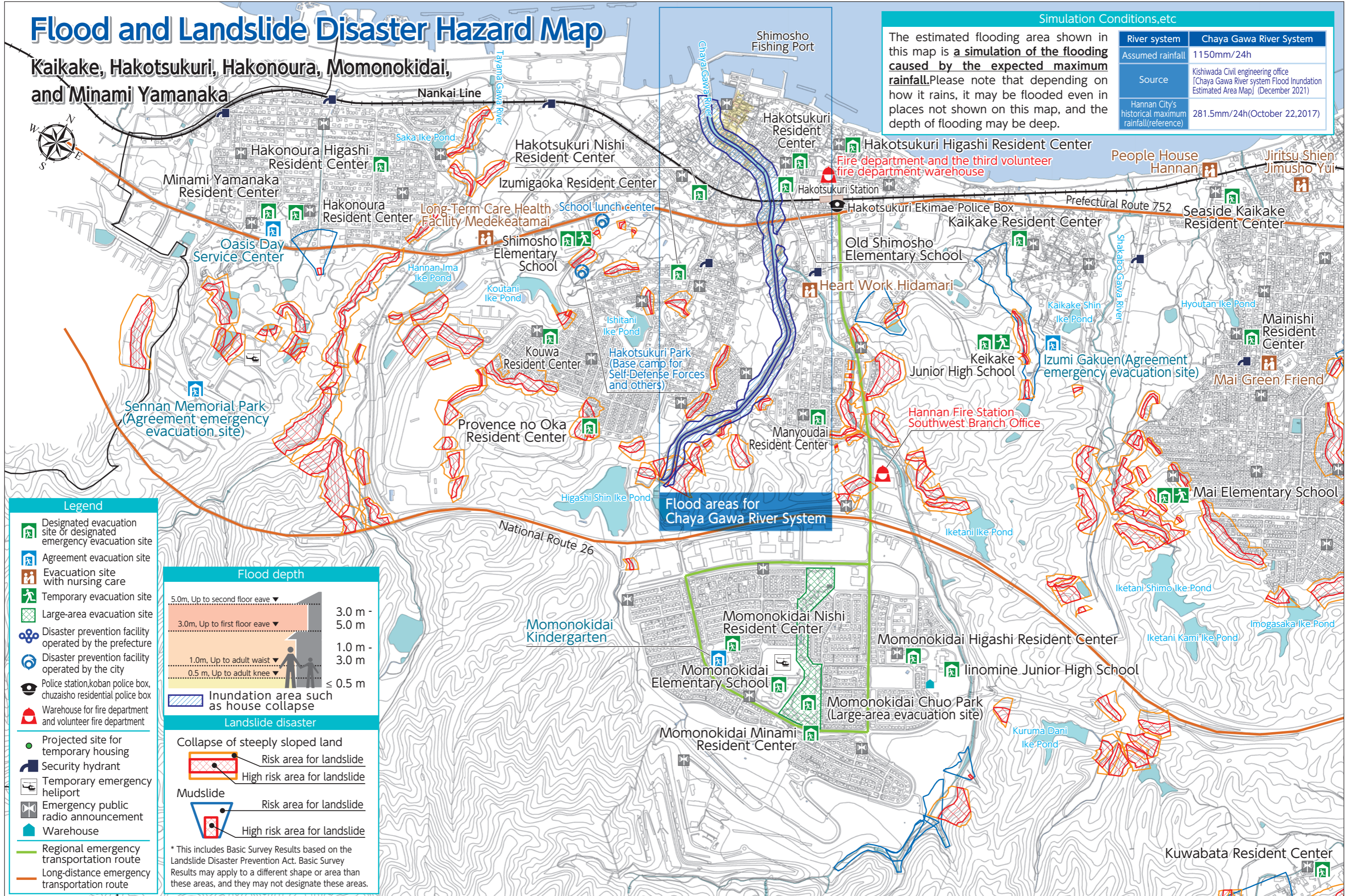


## Flood and Landslide Disaster Hazard Map

Kaikake, Hakotsukuri, Hakonoura, Momonokidai, and Minami Yamanaka

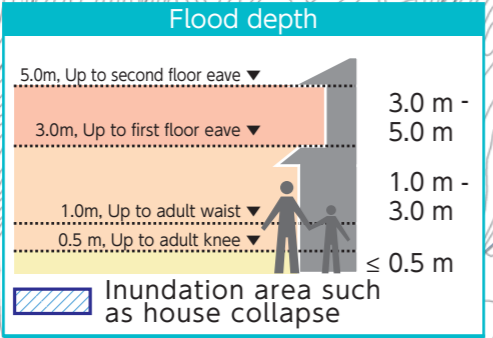


**Simulation Conditions, etc**

The estimated flooding area shown in this map is a **simulation of the flooding caused by the expected maximum rainfall**. Please note that depending on how it rains, it may be flooded even in places not shown on this map, and the depth of flooding may be deep.

River system	Chaya Gawa River System
Assumed rainfall	1150mm/24h
Source	Kishiwada Civil engineering office [Chaya Gawa River system Flood Inundation Estimated Area Map] (December 2021)
Hannan City's historical maximum rainfall(reference)	281.5mm/24h(October 22,2017)

- Legend**
- Designated evacuation site or designated emergency evacuation site
  - Agreement evacuation site
  - Evacuation site with nursing care
  - Temporary evacuation site
  - Large-area evacuation site
  - Disaster prevention facility operated by the prefecture
  - Disaster prevention facility operated by the city
  - Police station, koban police box, chuzaisho residential police box
  - Warehouse for fire department and volunteer fire department
  - Projected site for temporary housing
  - Security hydrant
  - Temporary emergency heliport
  - Emergency public radio announcement
  - Warehouse
  - Regional emergency transportation route
  - Long-distance emergency transportation route



- Landslide disaster**
- Collapse of steeply sloped land
    - Risk area for landslide
    - High risk area for landslide
  - Mudslide
    - Risk area for landslide
    - High risk area for landslide
- \* This includes Basic Survey Results based on the Landslide Disaster Prevention Act. Basic Survey Results may apply to a different shape or area than these areas, and they may not designate these areas.