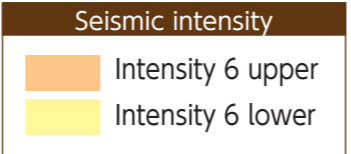
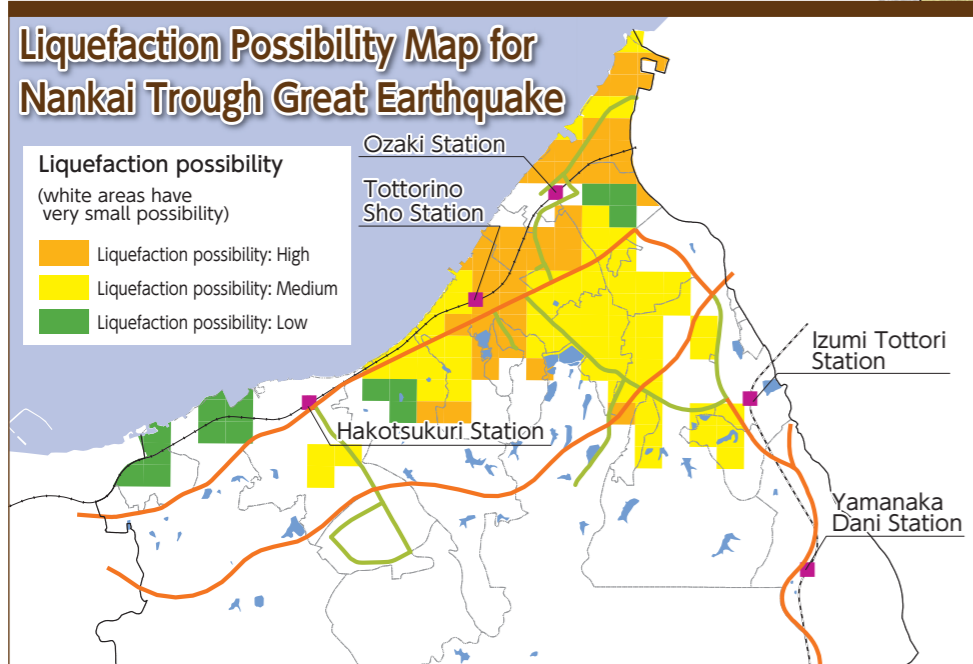
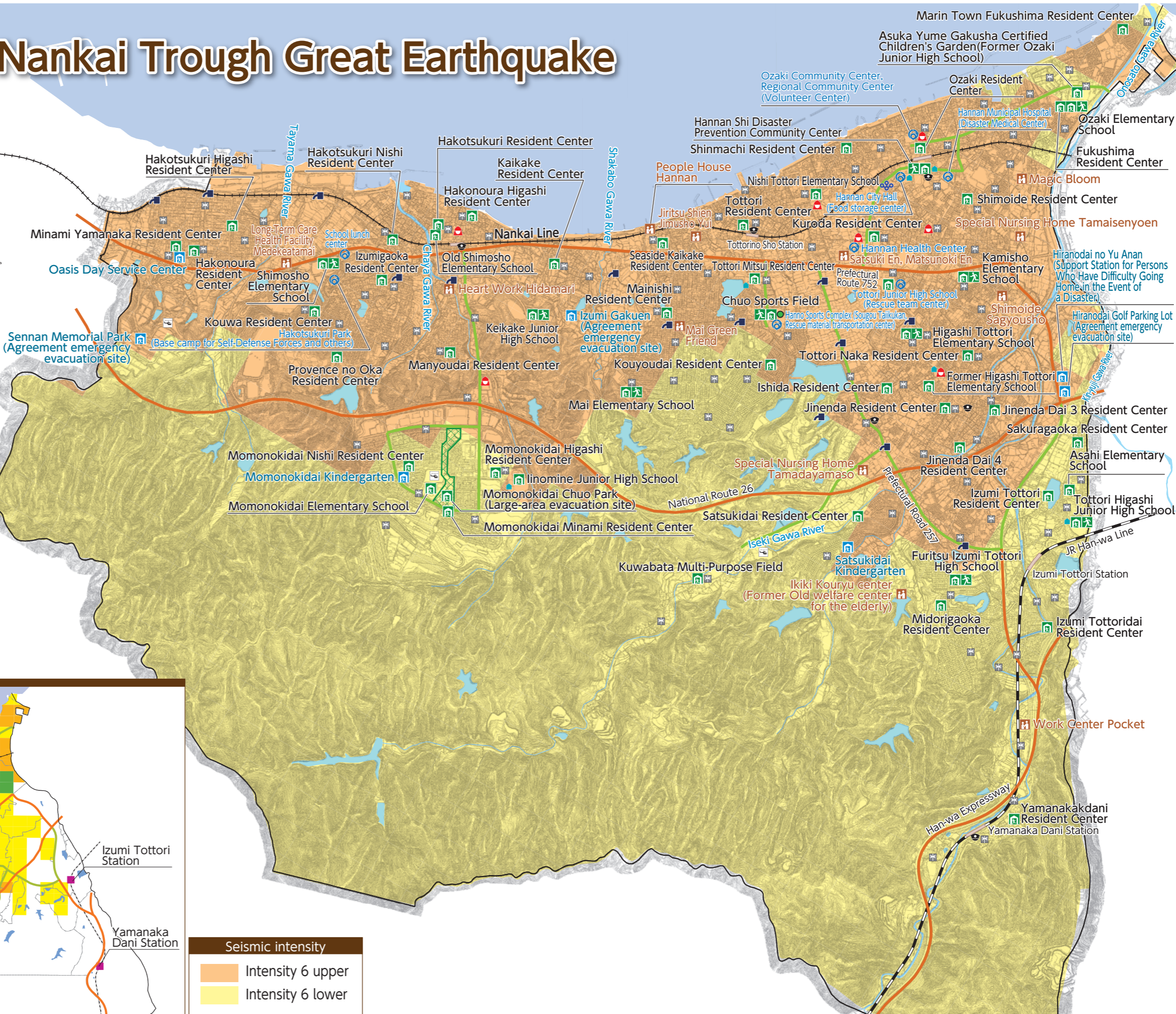




Hazard Map for Nankai Trough Great Earthquake

Legend

- Designated evacuation site or designated emergency evacuation site
- Agreement evacuation site
- Evacuation site with nursing care
- Temporary evacuation site
- Large-area evacuation site
- Disaster prevention facility operated by the prefecture
- Disaster prevention facility operated by the city
- Police station, koban police box, chuzai-sho residential police box
- Warehouse for fire department and volunteer fire department
- Projected site for temporary housing
- Security hydrant
- Temporary emergency heliport
- Emergency public radio announcement
- Warehouse
- Regional emergency transportation route
- Long-distance emergency transportation route





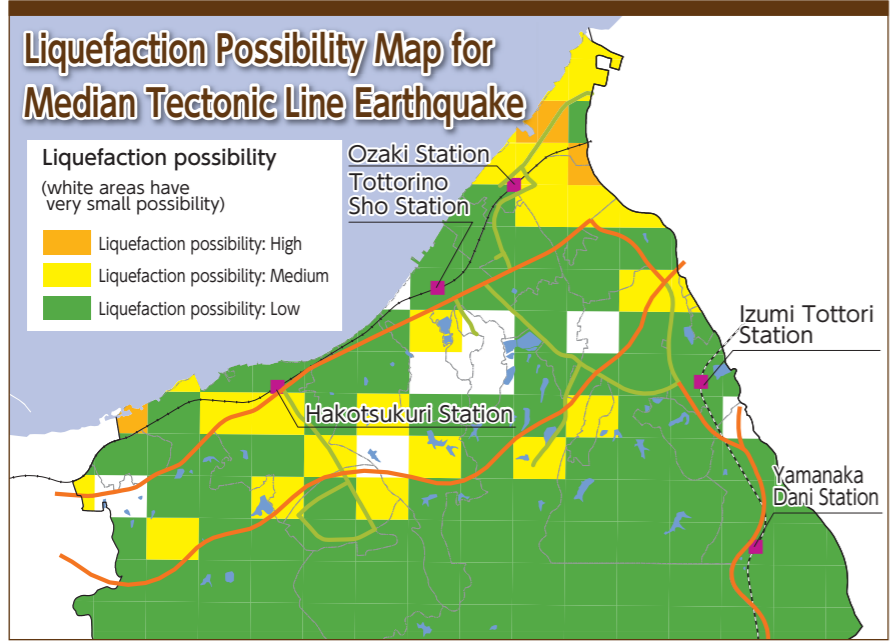
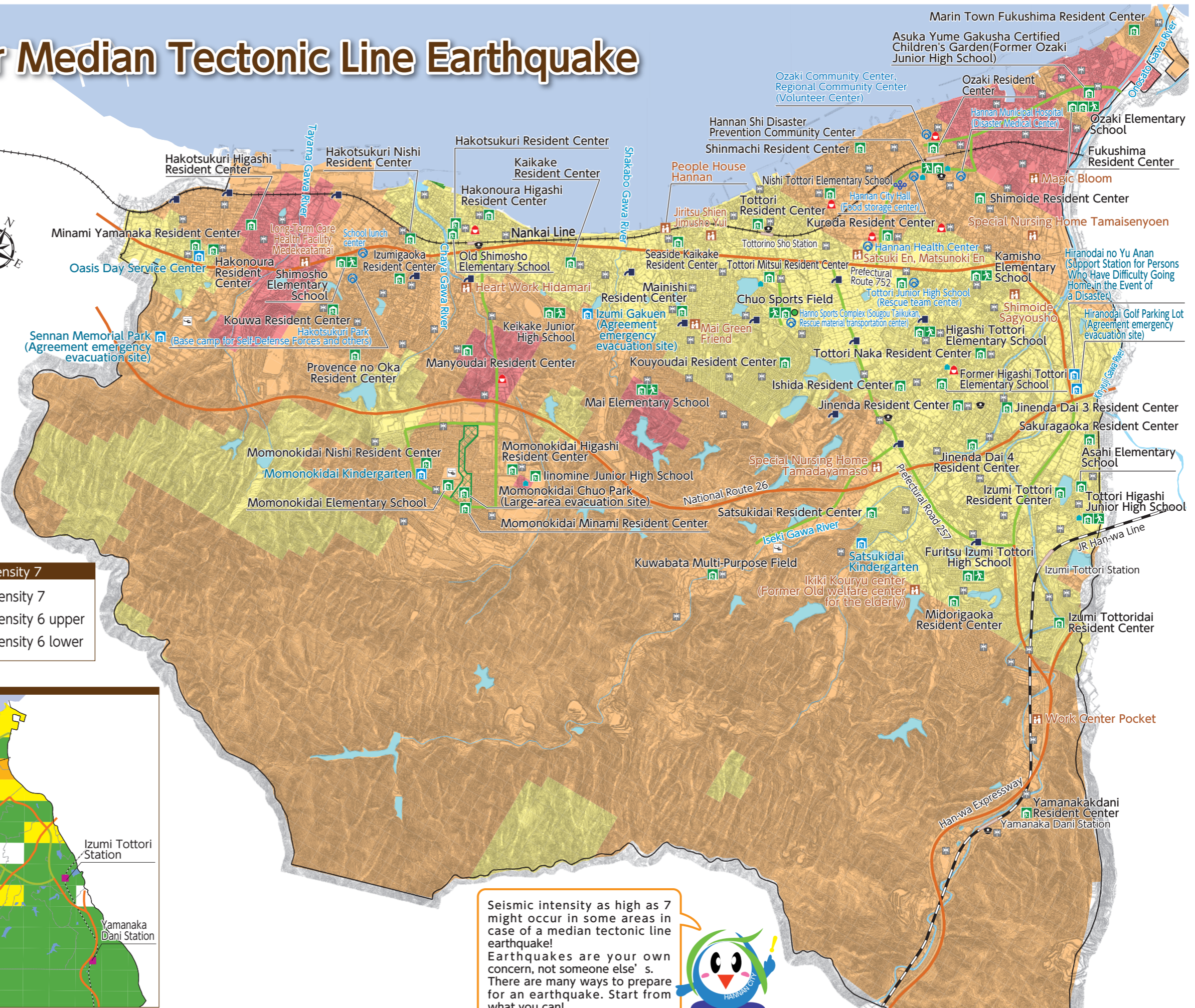
Hazard Map for Median Tectonic Line Earthquake

Legend

- Designated evacuation site or designated emergency evacuation site
- Agreement evacuation site
- Evacuation site with nursing care
- Temporary evacuation site
- Large-area evacuation site
- Disaster prevention facility operated by the prefecture
- Disaster prevention facility operated by the city
- Police station, koban police box, chuzaiho residential police box
- Warehouse for fire department and volunteer fire department
- Projected site for temporary housing
- Security hydrant
- Temporary emergency heliport
- Emergency public radio announcement
- Warehouse
- Regional emergency transportation route
- Long-distance emergency transportation route

Intensity 7

- Intensity 7
- Intensity 6 upper
- Intensity 6 lower



Seismic intensity as high as 7 might occur in some areas in case of a median tectonic line earthquake! Earthquakes are your own concern, not someone else's. There are many ways to prepare for an earthquake. Start from what you can!

