

阪南都市計画事業
鳥取土地区画整理事業換地図
泉南郡阪南町光陽台四丁目

縮尺 1:500

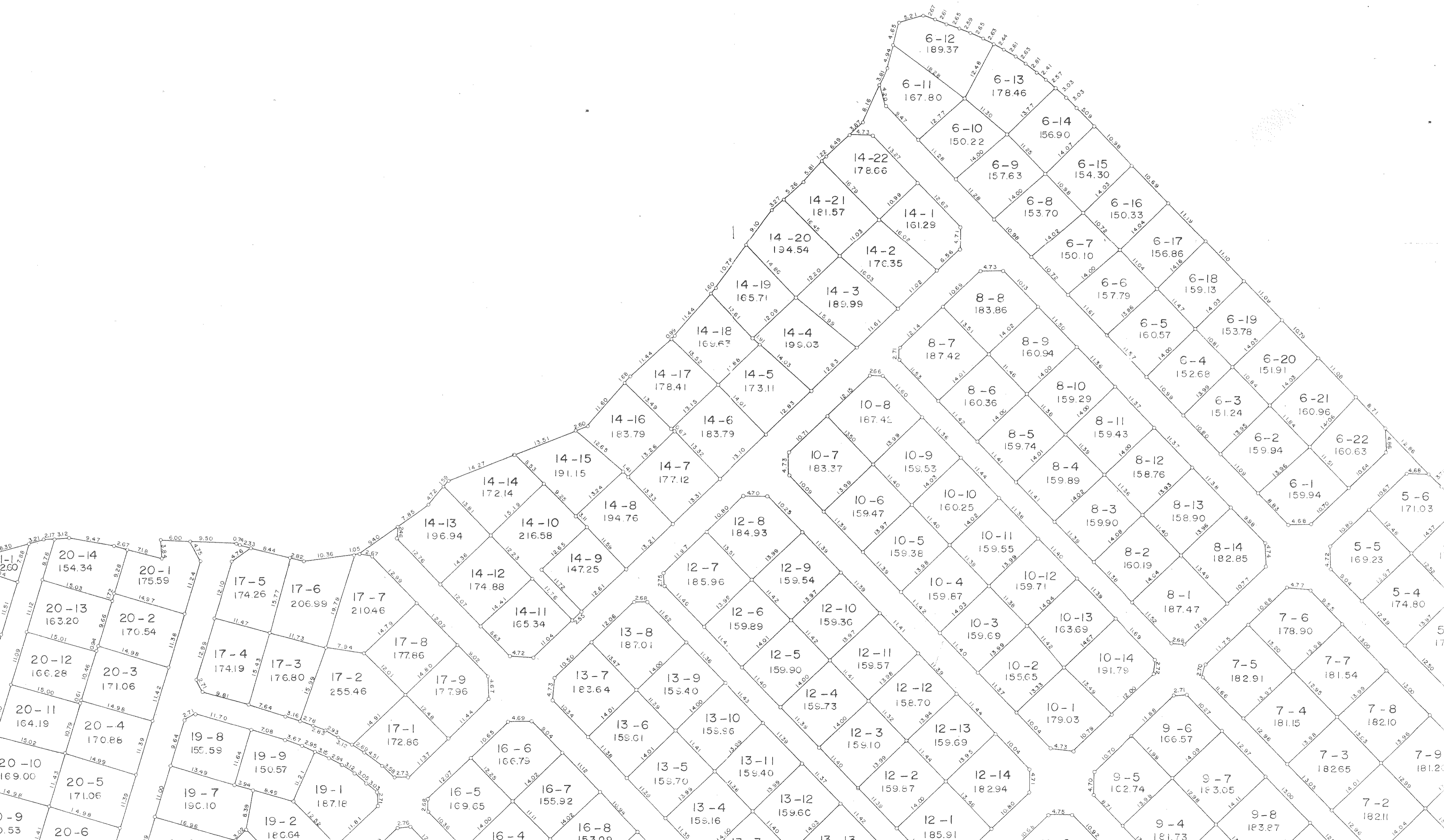


Y=70400

Y=184200

Y=70400

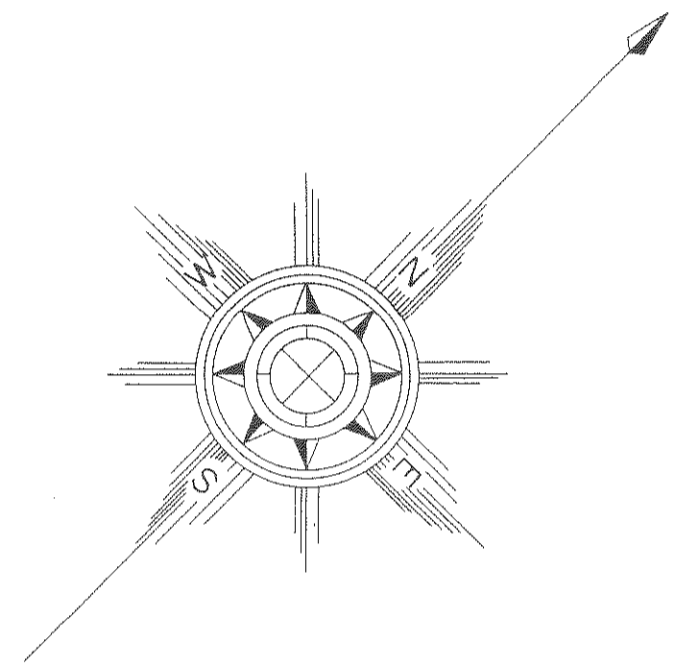
Y=184200



X=184500

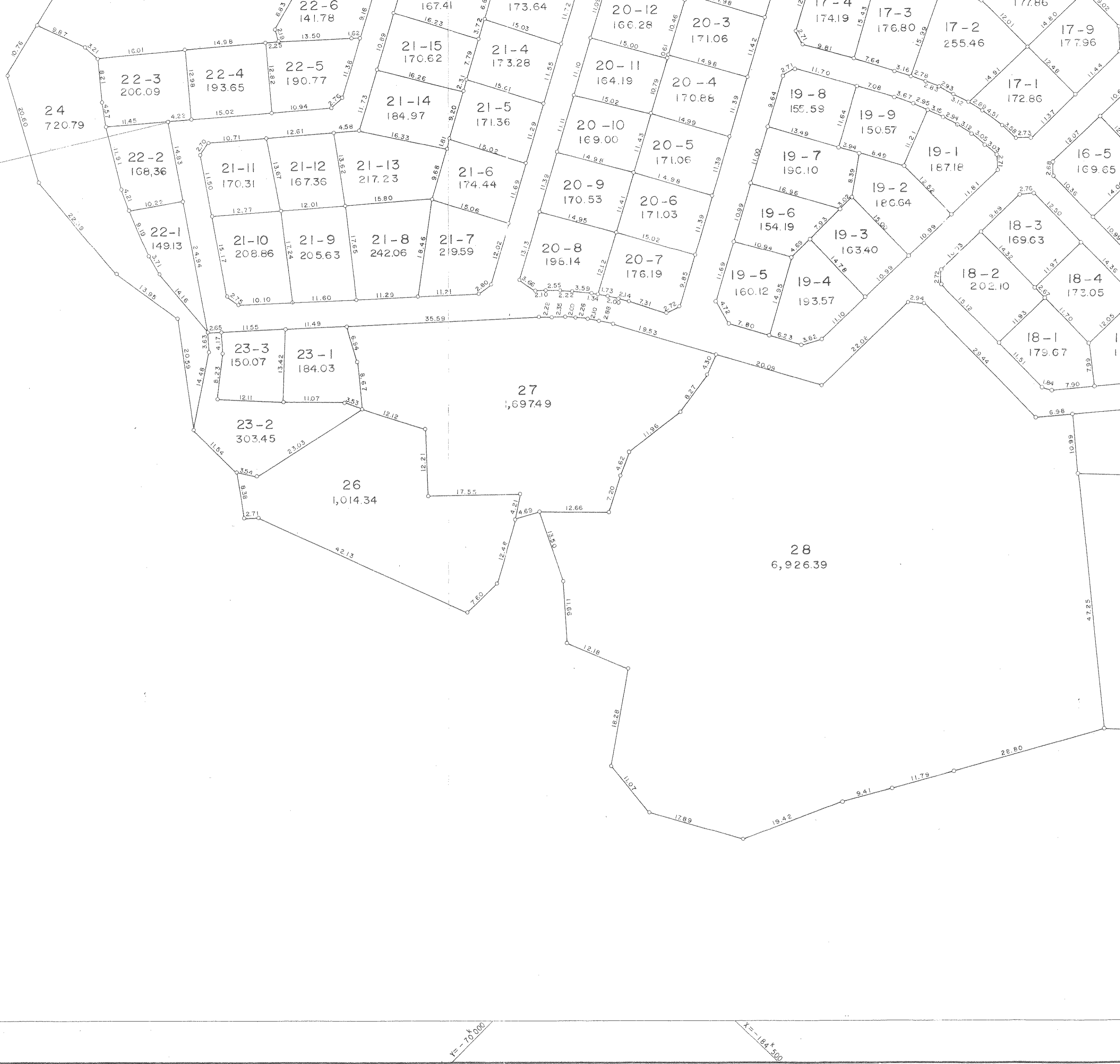
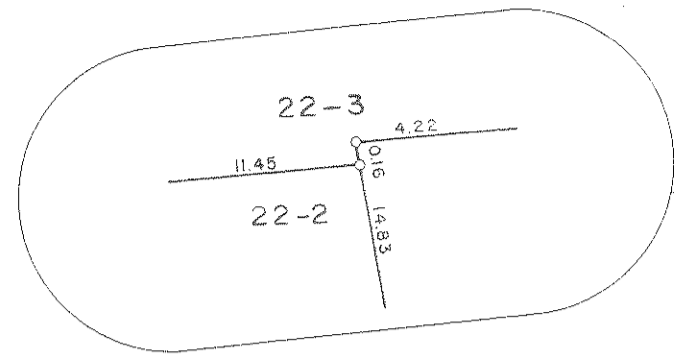
Y=184500

Y=10200



X=184500



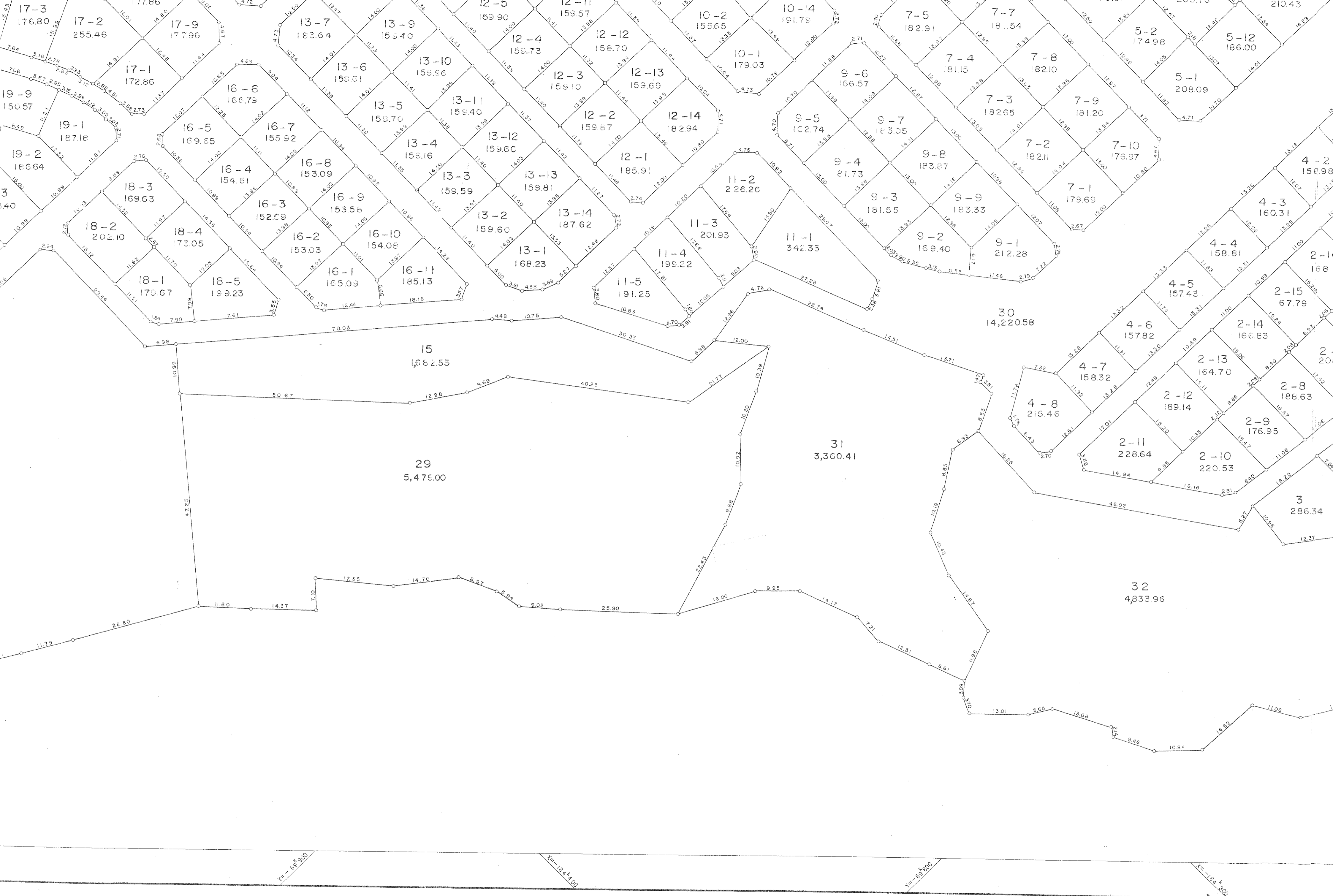


Y=70*200

Y=70*100

Y=70*000

X=184*500



17-3 176.80
17-2 255.46
17-1 172.86
17-9 177.96
13-7 183.64
13-9 159.40
13-10 159.96
13-11 159.40
13-5 159.70
13-4 159.16
13-3 159.59
13-2 159.60
13-1 168.23
12-5 159.90
12-11 159.57
12-4 159.73
12-12 158.70
12-3 159.10
12-2 159.87
12-1 185.91
12-13 159.69
12-14 182.94
10-2 155.65
10-14 191.79
10-1 179.03
9-6 166.57
9-7 183.05
9-8 183.27
9-4 181.73
9-3 181.55
9-2 169.40
9-1 212.28
7-5 182.91
7-7 181.54
7-4 181.15
7-8 182.10
7-3 182.65
7-2 182.11
7-10 176.97
7-1 179.69
5-2 174.98
5-12 186.00
5-1 208.09
19-9 150.57
19-1 187.18
19-2 186.64
18-3 169.63
18-2 202.10
18-4 173.05
18-1 179.67
18-5 199.23
16-6 166.79
16-5 169.65
16-4 154.61
16-8 153.09
16-9 153.58
16-2 153.03
16-10 154.08
16-1 165.09
16-11 185.13
11-2 226.26
11-3 201.93
11-4 199.22
11-5 191.25
11-1 342.35

15
1,662.55

29
5,479.00

31
3,360.41

30
14,220.58

32
4,833.96

4-2 158.98
4-3 160.31
4-4 158.81
4-5 157.43
4-6 157.82
4-7 158.32
4-8 215.46
2-14 160.83
2-13 164.70
2-12 189.14
2-11 228.64
2-10 220.53
2-8 188.63
2-9 176.95
3 286.34

Y=69 k 900

X=184 k 100

Y=69 k 900

X=184 k 300

