

阪南都市計画事業

鳥取土地区画整理事業換地図

泉南郡阪南町光陽台三丁目

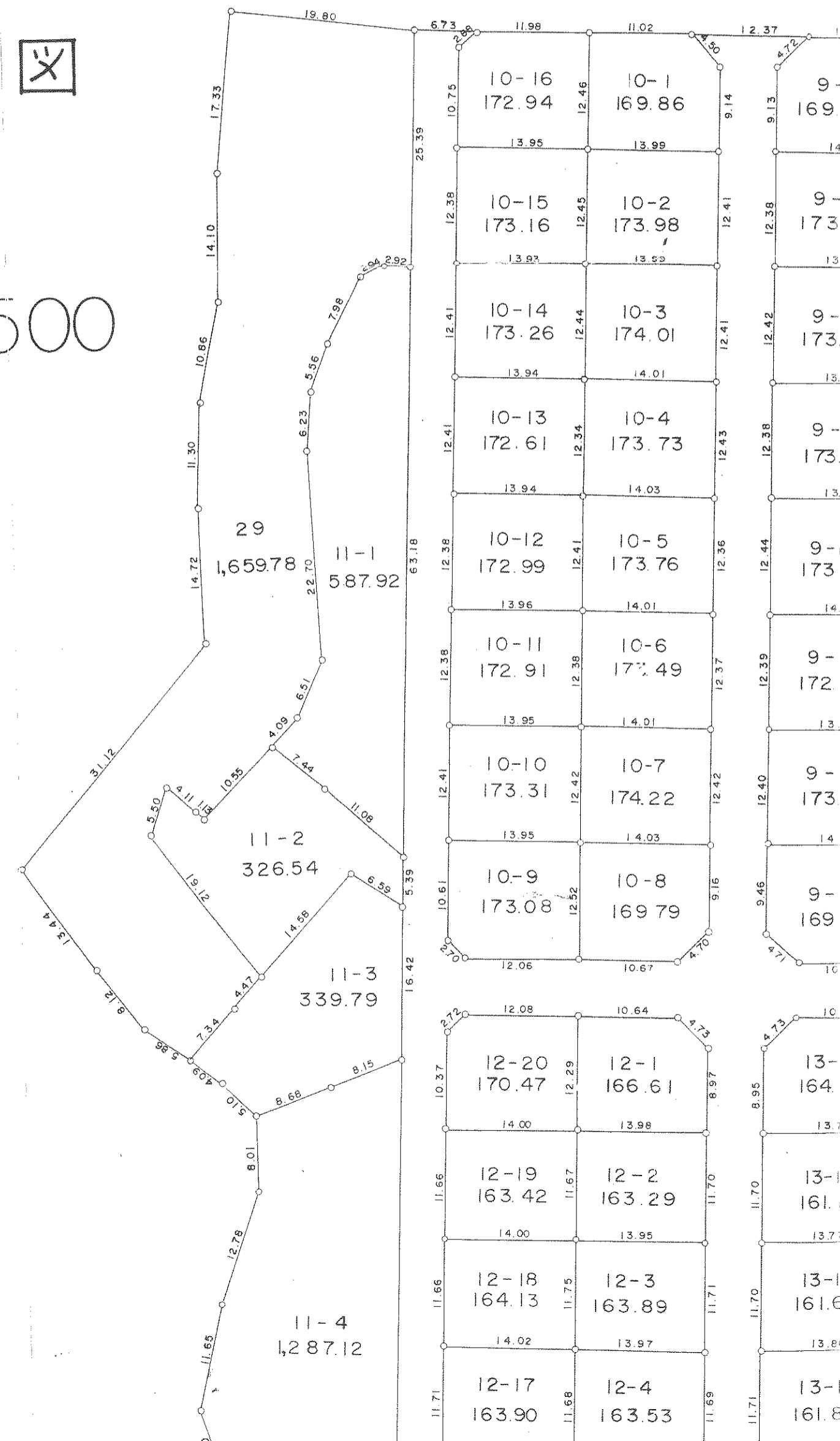
縮尺 1:500

X=183,900

X=184,000

Y=70,100

Y=70,000





Y=70000

Y=69900

Y=69800

23 21845.59

10-1
169.86

10-2
173.98

10-3
174.01

10-4
173.73

10-5
173.76

10-6
172.49

10-7
174.22

10-8
169.79

2-1
66.61

2-2
63.29

2-3
3.89

2-4
63.53

9-16
169.22

9-15
173.20

9-14
173.64

9-13
173.27

9-12
173.95

9-11
172.94

9-10
173.62

9-9
169.91

13-20
164.14

13-19
161.11

13-18
161.66

13-17
161.88

13-1
172.12

13-2
166.06

13-3
166.05

13-4
165.34

8-16
173.42

8-15
173.50

8-14
173.47

8-13
173.85

8-12
173.79

8-11
173.28

8-10
174.57

8-9
173.32

14-20
170.03

14-19
163.59

14-18
164.90

14-17
162.17

8-1
169.97

8-2
173.75

8-3
173.44

8-4
173.33

8-5
173.16

8-6
172.64

8-7
173.81

8-8
169.07

14-1
166.72

14-2
163.76

14-3
163.49

14-4
163.87

7-16
169.84

7-15
174.46

7-14
173.52

7-13
173.94

7-12
173.99

7-11
173.11

7-10
173.96

7-9
169.70

15-20
169.95

15-19
162.44

15-18
165.12

15-17
164.58

7-1
168.24

7-2
173.45

7-3
172.70

7-4
172.92

7-5
173.13

7-6
172.50

7-7
173.68

7-8
169.71

15-1
170.31

15-2
157.66

15-3
159.33

15-4
166.68

4-1
168.12

4-17
157.57

5-1
184.96

5-14
185.05

6-1
176.29

6-11
186.15

16-1
185.81

16-8
173.12

17-1
151.07

4-2
174.07

4-16
162.87

5-2
183.09

5-13
166.12

6-2
171.16

6-10
185.89

16-2
203.94

17-2
157.02

4-3
171.23

4-15
163.90

5-3
182.52

5-12
166.89

6-3
170.96

6-9
186.02

16-3
200.89

17-3
156.53

4-4
168.89

4-14
169.31

5-4
182.55

5-11
166.62

6-4
170.44

6-8
186.80

16-4
196.91

4-5
167.75

4-13
190.15

5-5
182.50

5-10
166.61

6-5
169.64

6-7
198.38

16-5
183.92

4-6
169.21

4-12
187.51

5-6
183.00

5-9
172.71

6-6
185.69

16-6
175.84

4-7
168.87

4-11
189.79

5-7
182.50

5-8
158.41

6-7
185.69

16-7
175.52

4-8
168.58

4-10
182.71

5-8
183.00

5-7
178.82

6-6
185.69

16-8
173.12

4-9
168.00

3-19
184.49

3-18
175.01

3-17
176.97

3-16
176.47

3-15
177.86

3-14
176.66

3-13
176.31

3-12
177.70

3-11
171.14

18-16
156.96

18-15
159.06

18-14
160.66

18-13
160.44

18-1
158.27

18-2
160.58

18-3
163.10

18-4
162.00

3-1
156.74

3-2
168.22

3-3
168.26

3-4
167.97

3-5
168.03

3-6
167.52

3-7
168.09

3-8
171.12

3-9
171.25

3-10
156.78

2-2
173.59

2-1
181.26

2-3
178.79

1-14
194.72

1-13
171.96

1-12
169.57

1-11
170.39

1-10
170.26

1-9
170.22

1-8
165.20

1-7
165.16

1-6
159.83

1-5
160.53

1-4
165.22

1-3
165.85

1-2
190.46

27
993.81

28
783.25

5-14
185.05

6-11
186.15

16-8
173.12

17-1
151.07

5-1
184.96

5-13
166.12

6-10
185.89

16-2
203.94

5-2
183.09

5-12
166.89

6-9
186.02

16-3
200.89

5-3
182.52

5-11
166.62

6-8
186.80

16-4
196.91

5-4
182.55

5-10
166.61

6-7
198.38

16-5
183.92

5-5
182.50

5-9
172.71

6-6
185.69

16-6
175.84

5-6
183.00

5-8
158.41

6-5
169.64

16-7
175.52

5-7
178.82

6-4
170.44

6-7
198.38

16-8
173.12

5-8
158.41

6-3
170.96

6-6
185.69

16-9
186.02

5-9
172.71

6-5
169.64

16-10
185.89

5-10
166.61

6-4
170.44

6-8
186.80

16-11
186.15

5-11
166.62

6-3
170.96

6-7
198.38

16-12
186.02

5-12
166.89

6-2
171.16

6-9
186.02

16-13
186.02

5-13
166.12

6-1
176.29

6-10
185.89

6-8
186.80

16-14
186.15

5-14
185.05

6-11
186.15

6-9
186.02

6-7
198.38

16-15
186.15

5-15
185.05

6-12
186.02

6-6
185.69

16-16
186.15

3-19
184.49

3-18
175.01

3-17
176.97

3-16
176.47

3-15
177.86

3-14
176.66

3-13
176.31

3-12
177.70

3-11
171.14

18-16
156.96

18-15
159.06

18-14
160.66

18-13
160.44

18-1
158.27

18-2
160.58

18-3
163.10

18-4
162.00

3-1
156.74

3-2
168.22

3-3
168.26

3-4
167.97

3-5
168.03

3-6
167.52

3-7
168.09

3-8
171.12

3-9
171.25

3-10
156.78

2-2
173.59

2-1
181.26

2-3
178.79

1-14
194.72

1-13
171.96

1-12
169.57

1-11
170.39

1-10
170.26

1-9
170.22

1-8
165.20

1-7
165.16

1-6
159.83

1-5
160.53

1-4
165.22

1-3
165.85

1-2
190.46

27
993.81

28
783.25

3-19
184.49

3-18
175.01

3-17
176.97

3-16
176.47

3-15
177.86

3-14
176.66

3-13
176.31

3-12
177.70

3-11
171.14

18-16
156.96

18-15
159.06

18-14
160.66

18-13
160.44

18-1
158.27

18-2
160.58

18-3
163.10

18-4
162.00

3-1
156.74

3-2
168.22

3-3
168.26

3-4
167.97

3-5
168.03

3-6
167.52

3-7
168.09

3-8
171.12

3-9
171.25

3-10
156.78

2-2
173.59

2-1
181.26

2-3
178.79

1-14
194.72

1-13
171.96

1-12
169.57

1-11
170.39

1-10
170.26

1-9
170.22

1-8
165.20

1-7
165.16

1-6
159.83

1-5
160.53

1-4
165.22

1-3
165.85

1-2
190.46

27
993.81

28
783.25

1-14
194.72

1-13
171.96

1-12
169.57

1-11
170.39

1-10
170.26

1-9
170.22

1-8
165.20

1-7
165.16

1-6
159.83

1-5
160.53

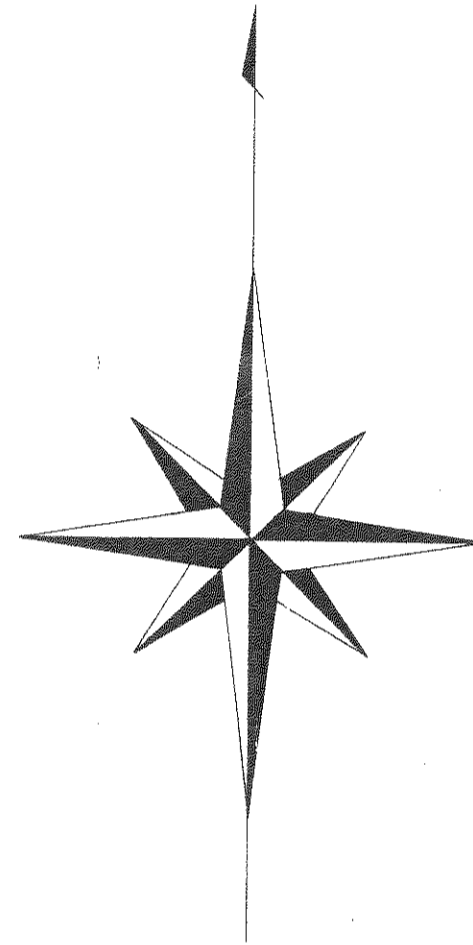
1-4
165.22

1-3
165.85

1-2
190.46

27
993.81

28
783.25



X=-183,900

X=-184,000



23 21845.59

25
4,258.02

26
1177.11

28
783.25

27
993.81

17-4
1,297.48

19
190.84

20-14
186.81

20-1
147.41

20-12
173.97

20-3
148.75